



2018 SALARY GUIDE

for Accounting
and Finance
Professionals



rh Robert Half®

About the Data in the 2018 Salary Guide

Robert Half has made it our mission for nearly 70 years to provide salary data to help companies benchmark their compensation levels with what other firms are offering. Those of you who are familiar with our guides will find even more comprehensive data this year than ever before.

WHY THE CHANGE?

Our clients have expressed interest in more detailed information on salaries. To help with this, we've presented salaries in percentiles versus the low and high ranges we have previously used. The information is based on our current salary data and analysis of the thousands of job placements we make every year.

WHAT HASN'T CHANGED

As always, we are committed to providing you with the most accurate information on hiring and compensation trends. The 2018 Robert Half Salary Guide for Accounting and Finance Professionals includes the following:

- Average starting salaries for more than 190 positions based on our job placements from the past year
- Regional variances that can help you adjust salaries to your local market
- New data on benefits, incentives and perks

For more information and access to our Salary Calculator, please visit our Salary Center at [roberthalf.com/salary-guide/finance](https://www.roberthalf.com/salary-guide/finance)

Use our Salary Guide to learn about compensation trends, positions in demand, and insights on recruiting and retention.

Table of Contents

- | | | | |
|----|--|----|---|
| 3 | Welcome to the 2018 Robert Half Salary Guide | 20 | Calculate Your Custom Salary |
| 4 | Hiring Trends in Accounting and Finance | 21 | Local Market Variances |
| 8 | Where the Jobs Are | 23 | Building an Engaged, Productive Team |
| 10 | Financial Hiring in the Healthcare Industry | 25 | Pay to Perks: Trends in Compensation Packages |
| 12 | How to Use Our Salary Tables | 28 | About Robert Half |
| 13 | Accounting and Finance Salaries | 29 | Worldwide Locations |



Compensation ranges are based on placements made by our recruiting and staffing professionals across the United States.

Welcome to the 2018 Robert Half Salary Guide

The guide is your tool for successfully negotiating salaries with the professionals you want to recruit and, ultimately, retain.

A key part of attracting the best people is paying them well — at least as much as your competitors are offering or more.

The 2018 Robert Half Salary Guide for Accounting and Finance Professionals contains compensation figures based on placements made by our U.S. recruiting and staffing professionals. We present this data, along with our staffing managers' knowledge of market conditions and hiring trends, to show where we believe compensation is headed and help you budget accordingly. The guide is also your tool for successfully negotiating salaries with the professionals you want to recruit and, ultimately, retain.

The salary tables are the core of the guide. This year, we've made changes to how we present the salary data, as described on [Page 12](#). Elsewhere in the guide, you'll find an analysis of hiring trends in the accounting and finance fields.

We hope the Salary Guide helps you build a more engaged and productive team, and we invite you to visit us at roberthalf.com for assistance with your staffing needs.

Hiring Trends in Accounting and Finance

Companies frequently offer salaries above market rates even before negotiations with candidates begin.



A good accountant is hard to find — now more than ever. Competition to recruit and retain top performers in the finance and accounting fields has long been fierce, but a tightening pool of skilled candidates could make it even more so.

Managers are offering top job candidates and employees higher salaries and, when they can, more scheduling flexibility to help professionals achieve better work-life balance. Employers, in turn, are often rewarded with lower turnover.

On the skills front, businesses are placing more emphasis on data analytics experience as they evaluate financial job candidates. More and more, firms seek technological abilities to complement traditional accounting and finance skills.

SWEETENING SALARIES

Similar to past years, firms across industries are bumping up compensation. In fact, companies frequently offer salaries above market rates even before negotiations with candidates begin. Employers often extend signing bonuses, as well.

MAKING RETENTION A TOP PRIORITY

Because it's getting harder — and more expensive — to replace staff who leave for new jobs, firms are putting extra emphasis on retention. Managers know that top professionals are likely to look for new opportunities if they can't envision their next steps at the company. In response, companies are mapping clear career paths and offering mentoring programs. Organizations also are enhancing their corporate cultures.

RETENTION WORRIES

CFOs surveyed weighed in on how concerned they are about losing their staff members. Among the findings:



45% are somewhat or very concerned about retaining their current staff.



36% think they could lose staff within the next year.

Source: Robert Half survey of more than 2,200 CFOs in the United States

FOCUSING ON FIT

To reduce the risk of making a bad hire, more businesses are performing pre-employment personality assessments to gauge how well-suited candidates are to the firm's workplace environment. While these evaluations are not new, more companies are taking advantage of them. A word of warning, though: Firms need to make sure any kind of personality indicator is both legal and appropriate for hiring.

ADJUSTING HIRING EXPECTATIONS

Given the limited number of skilled candidates, companies have become increasingly flexible with their hiring requirements. Focusing on hiring for certain skills and being willing to train for others, for instance, allows businesses to be more nimble, giving them an edge over firms that remain rigid in their approach.

THE RESULTS OF A BAD HIRE

Percentages of business owners surveyed who experienced the following outcomes due to a bad hire:



54%

Wasted time hiring and training someone



53%

Increased stress on the team



37%

Increased stress on the manager



20%

Decreased confidence in management's ability to make good hiring decisions

Source: Robert Half survey of more than 1,000 business owners and human resources managers in the United States at companies with one to 499 employees

DON'T WASTE TIME ON A BAD HIRE.

GET HELP HIRING

ENHANCING PERKS

The popularity of flexible scheduling and telecommuting is growing, but businesses are realizing they need to provide even more in the way of perks. Free snacks, lunches and subsidized gym memberships, for example, have been offered for years at tech companies and are now becoming common elsewhere. In addition, casual dress codes are increasingly prevalent, if appropriate for the business.

INVESTING IN EMPLOYEE DEVELOPMENT

Professional development is taking on greater importance, and more employees expect training that supports their personal career growth. In fact, many professionals won't stay at a company that doesn't provide continuing education opportunities. For financial teams, companies most commonly offer training in regulatory compliance, Robert Half research found.

RECOGNIZING RISKS OF DELAYED HIRING

Many companies are taking longer to make hiring decisions, but doing so puts them at risk of losing top candidates. Sixty-nine percent of workers in a Robert Half survey said they'd lose interest in a job if they had not heard from the employer within two weeks of the interview. More businesses need to realize that, while a thorough vetting of candidates is critical, stretching out the process longer than necessary can be a morale buster for prospective hires and puts the firm in a negative light.

GROWING THEIR DIGITAL FOOTPRINT

Firms are stepping up their online presence and branding to appeal to job seekers. This includes sharing more information online about employee perks and benefits, as well as other attractive elements of the work environment.

HIRING PROJECT PROFESSIONALS

Companies are bringing in interim and project professionals for cyclical needs and initiatives requiring specialized expertise. Businesses are working with staffing firms to locate hard-to-find professionals. This often includes individuals amenable to interim-to-hire arrangements, which allow managers to assess the on-the-job performance of potential new hires before extending a full-time offer.



69%
of workers

said they'd lose interest in a job if they had not heard from the employer within two weeks of the interview.

Source: Survey of more than 1,000 adults currently employed in professional environments in the United States

Where the Jobs Are

Companies are hiring accountants at all levels. They're also looking for financial analysts, payroll staff, controllers, internal and information technology (IT) auditors, and risk and compliance professionals. Hiring is especially strong in the healthcare, real estate, nonprofit, construction and technology sectors.

Due to new revenue recognition and lease accounting standards, professionals with experience in revenue accounting, revenue reporting, and U.S. Securities and Exchange Commission reporting are in particularly high demand. In addition, firms seek business systems analysts who can assist in installing updates and performing conversions for accounting software systems.

PUBLIC ACCOUNTING

There's high demand for top talent in public accounting due to a severe shortage of skilled candidates. In response, firms are taking advantage of every available recruiting strategy — from employee referrals to wooing back former staff.

Public accounting firms are pursuing recent college graduates with accounting degrees, and frequently offering higher pay than their competitors, as well as bonuses, perks and additional vacation

time. To attract and retain in-demand accountants, many firms are prioritizing work-life balance policies, such as compressed workweeks, telecommuting and flexible work schedules.

FINANCIAL SERVICES

Demand in the financial services sector looks to remain strong. Many institutions are strengthening their teams and seek general accountants, financial analysts, controllers, and internal and IT auditors. Commercial banking, lending companies, and hedge fund and asset management firms are showing particularly strong demand for these professionals, especially those with expertise in data analytics, credit analytics, and risk and compliance.

As the use of big data grows, top candidates for financial services jobs must possess not only traditional finance knowledge, but also technology skills. Firms favor professionals with advanced Excel and Access abilities and experience with SAS and Python. Institutions also look for compliance professionals possessing certifications such as the CRCM (certified regulatory compliance manager) and FRM (financial risk manager) designations.

Hiring at a Glance

IN-DEMAND SKILLS

- Advanced Excel expertise
- General knowledge of enterprise resource planning (ERP) systems, especially SAP, Oracle and Microsoft Dynamics GP
- Knowledge of cloud-based systems, like NetSuite and Workday
- Experience with data analytics and database management software, especially SQL
- Proficiency in Hyperion, for financial analyst positions
- QuickBooks expertise, in small and midsize businesses
- Strong communication skills
- Industry-specific experience
- Leadership abilities
- Adaptability and flexibility
- Ability to collaborate with multiple departments
- Multilingualism

IN-DEMAND CERTIFICATIONS

- CPA (certified public accountant)
- MBA (master of business administration)
- CFA (chartered financial analyst)
- CGMA (chartered global management accountant)
- CIA (certified internal auditor)
- CISA (certified information systems auditor)
- CMA (certified management accountant)
- CPP (certified payroll professional)
- Bachelor's degree in accounting or finance

SEE OPEN FINANCE AND ACCOUNTING JOBS.

BROWSE JOBS

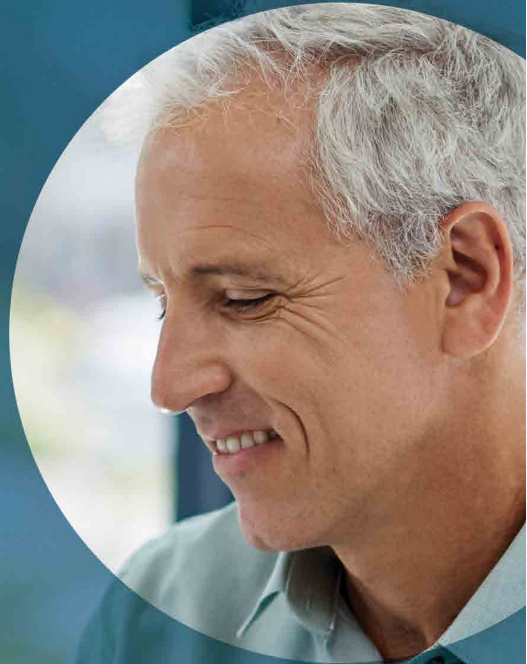
HOT POSITIONS

- Accounting manager
- Internal auditor
- Senior accountant
- Controller
- Payroll manager
- Staff accountant
- Financial analyst



Financial Hiring in the Healthcare Industry

Providers are investing in process improvements, technology and hiring to ensure the revenue cycle is operating at its highest level.



Healthcare organizations in the United States continue to pursue their long-term goals of reducing costs and improving service quality. Firms are responding to a growing patient and membership population by building and maintaining skilled teams. When hiring, decision makers must address areas such as:

CONSUMER MINDSET

Organizations are tasked with improving the customer experience to gain a competitive edge and increase their patient or membership bases. To provide consumers with additional transparency on costs and expenses related to their care, healthcare organizations will need to hire more revenue cycle, financial and operations staff.

REVENUE CYCLE EFFICIENCY

Providers are investing in process improvements, technology and hiring to ensure the revenue cycle is operating at its highest level. This is vital in a landscape where reimbursement models continue to change. Organizations need not only cutting-edge technology but also staff with advanced skill sets.

PAYMENT REFORM

Providers and payers are exploring new payment models to reduce costs and improve the quality of care. In the process, organizations must consider

many financial, operational and compliance ramifications, increasing the need for skilled finance, revenue cycle and operations professionals.

INDUSTRY CONSOLIDATION

As the industry becomes more competitive, healthcare organizations continue to consolidate. Mergers, acquisitions, partnerships and other arrangements give these entities access to capital, technology, processes, and new products and services that can help improve performance. To evaluate possible deals and handle the details of integrating with another organization, employers are likely to need additional financial, revenue cycle and operations professionals.

IN-DEMAND FINANCE SPECIALTIES IN HEALTHCARE

Medical billing

Medical collections

Financial, data and
business analysis

Accounts payable

How to Use Our Salary Tables

To help hiring managers determine salary levels for new hires, we've provided starting compensation ranges by percentile, as defined in the chart below.

When a manager is establishing a starting salary, multiple factors come into play. A firm's compensation philosophy, the range of other benefits and incentives offered, and the level of competition for individuals within a particular market all may affect starting salaries. Following are additional elements to consider and how they correlate with the high and low ends of the compensation figures provided:

| PERCENTILE | 25 TH | 50 TH (MIDPOINT) | 75 TH | 95 TH |
|-----------------------------------|---|--|---|--|
| Candidate Experience Level | Less experience than typical | Average experience | More experience than typical | Significant, highly relevant experience |
| Candidate Skills/Expertise | Skills require development | Necessary skills to meet job requirements | Strong skill set; may include specialized certifications | High level of expertise, including specialized certifications |
| Job Complexity/Duties | Role may be in an industry with low competition for talent or in a smaller, less complex organization or department | Role may be of average complexity or in an industry where competition for talent is moderate | Role may be fairly complex or in a fairly competitive industry for talent | Role may be highly complex and more strategic in nature than usual; may be in a highly competitive industry for talent |

The salaries listed on the following pages are based on actual placements in our offices throughout the United States, as well as an analysis of the demand for the role, the supply of talent and other market conditions. Salaries reflect starting pay only. Bonuses, incentives and other forms of compensation are not taken into account. In some situations, it's possible that compensation would fall above or below the percentiles provided. Our recruiters can help you establish appropriate compensation levels for new hires based on your company's goals and budget.

Salaries represent national averages and can be adjusted for your market using the local variance information on [Pages 21-22](#).

Accounting and Finance Salaries

CORPORATE ACCOUNTING

| TITLE/EXPERIENCE | PERCENTILES | | | |
|--------------------------------------|------------------|------------------------------|------------------|------------------|
| | 25 TH | 50 TH MIDPOINT | 75 TH | 95 TH |
| Chief Financial Officer ^a | \$ 119,000 | \$ 192,500 | \$ 236,500 | \$ 497,000 |
| Treasurer ^a | \$ 110,000 | \$ 185,000 | \$ 227,500 | \$ 483,500 |
| Vice President, Finance ^a | \$ 105,500 | \$ 176,500 | \$ 217,000 | \$ 400,000 |
| Director of Finance ^a | \$ 100,000 | \$ 145,500 | \$ 162,750 | \$ 245,000 |
| Director of Accounting | \$ 95,000 | \$ 140,000 | \$ 160,000 | \$ 222,750 |
| Director of Financial Reporting | \$ 93,250 | \$ 135,000 | \$ 158,500 | \$ 230,000 |
| Corporate Controller ^a | \$ 102,000 | \$ 170,000 | \$ 195,500 | \$ 260,000 |
| Controller ^a | \$ 90,500 | \$ 115,000 | \$ 138,250 | \$ 220,500 |
| Divisional Controller ^a | \$ 100,000 | \$ 140,000 | \$ 160,000 | \$ 205,500 |
| Assistant Controller ^a | \$ 72,000 | \$ 103,500 | \$ 125,500 | \$ 170,000 |
| Assistant Treasurer | \$ 70,250 | \$ 91,250 | \$ 109,750 | \$ 168,500 |
| Tax Director ^a | \$ 109,500 | \$ 135,000 | \$ 164,000 | \$ 268,000 |
| Tax Manager ^b | \$ 90,000 | \$ 104,000 | \$ 125,000 | \$ 162,000 |

COMPLIANCE

| | | | | |
|---------------------------|------------|------------|------------|------------|
| Chief Compliance Officer | \$ 130,000 | \$ 165,000 | \$ 198,500 | \$ 262,500 |
| Compliance Director | \$ 112,750 | \$ 135,000 | \$ 162,500 | \$ 202,000 |
| Compliance Officer | \$ 83,500 | \$ 100,000 | \$ 120,250 | \$ 159,250 |
| Senior Compliance Analyst | \$ 71,000 | \$ 85,000 | \$ 102,250 | \$ 122,000 |
| Compliance Analyst | \$ 62,500 | \$ 75,000 | \$ 90,250 | \$ 101,500 |

INTERNAL AUDITOR

| | | | | |
|--|------------|------------|------------|------------|
| Chief Audit Executive/Vice President, Internal Audit/Internal Audit Director | \$ 126,000 | \$ 175,000 | \$ 210,500 | \$ 282,000 |
| Manager | \$ 95,000 | \$ 110,000 | \$ 132,250 | \$ 155,500 |
| Senior | \$ 74,000 | \$ 85,000 | \$ 102,250 | \$ 118,000 |
| 1 to 3 Years | \$ 57,500 | \$ 69,000 | \$ 83,000 | \$ 93,000 |
| Up to 1 Year | \$ 37,500 | \$ 45,000 | \$ 54,000 | \$ 69,500 |

IT AUDITOR

| | | | | |
|--------------|-----------|------------|------------|------------|
| Manager | \$ 96,000 | \$ 115,000 | \$ 138,250 | \$ 183,000 |
| Senior | \$ 75,000 | \$ 90,000 | \$ 108,250 | \$ 143,250 |
| 1 to 3 Years | \$ 61,750 | \$ 74,000 | \$ 89,000 | \$ 117,750 |
| Up to 1 Year | \$ 41,750 | \$ 50,000 | \$ 60,250 | \$ 79,500 |

CORPORATE ACCOUNTING

| TITLE/EXPERIENCE | PERCENTILES | | | |
|--------------------------------|------------------|------------------------------|------------------|------------------|
| | 25 TH | 50 TH MIDPOINT | 75 TH | 95 TH |
| FINANCIAL REPORTING | | | | |
| Manager | \$ 91,750 | \$ 110,000 | \$ 132,250 | \$ 165,000 |
| Senior | \$ 70,500 | \$ 80,000 | \$ 96,250 | \$ 118,250 |
| 1 to 3 Years | \$ 58,500 | \$ 70,000 | \$ 84,250 | \$ 91,750 |
| Up to 1 Year | \$ 48,500 | \$ 58,000 | \$ 69,750 | \$ 73,000 |
| SEC FINANCIAL REPORTING | | | | |
| Director | \$ 112,750 | \$ 135,000 | \$ 162,250 | \$ 214,750 |
| Manager | \$ 91,750 | \$ 110,000 | \$ 132,250 | \$ 175,000 |
| Analyst | \$ 66,750 | \$ 80,000 | \$ 96,250 | \$ 127,250 |
| GENERAL ACCOUNTANT | | | | |
| Manager | \$ 75,000 | \$ 90,000 | \$ 108,250 | \$ 140,000 |
| Senior | \$ 62,500 | \$ 75,000 | \$ 90,250 | \$ 115,000 |
| 1 to 3 Years | \$ 48,000 | \$ 60,000 | \$ 72,250 | \$ 95,500 |
| Up to 1 Year | \$ 37,500 | \$ 45,000 | \$ 54,000 | \$ 68,500 |
| COST ACCOUNTANT | | | | |
| Manager | \$ 77,000 | \$ 92,000 | \$ 110,000 | \$ 142,000 |
| Senior | \$ 64,000 | \$ 77,000 | \$ 91,750 | \$ 117,250 |
| 1 to 3 Years | \$ 51,750 | \$ 62,000 | \$ 74,250 | \$ 98,500 |
| Up to 1 Year | \$ 41,000 | \$ 48,500 | \$ 58,250 | \$ 77,000 |
| TAX ACCOUNTANT | | | | |
| Manager | \$ 87,750 | \$ 105,000 | \$ 126,250 | \$ 157,000 |
| Senior | \$ 71,000 | \$ 85,000 | \$ 102,250 | \$ 125,000 |
| 1 to 3 Years | \$ 57,500 | \$ 69,000 | \$ 83,000 | \$ 99,750 |
| Up to 1 Year | \$ 42,000 | \$ 51,000 | \$ 61,250 | \$ 81,000 |
| FINANCIAL ANALYST | | | | |
| Director | \$ 104,500 | \$ 127,000 | \$ 150,500 | \$ 199,000 |
| Manager | \$ 83,500 | \$ 100,000 | \$ 120,250 | \$ 159,250 |
| Senior | \$ 66,750 | \$ 80,000 | \$ 96,250 | \$ 127,250 |
| 1 to 3 Years | \$ 54,250 | \$ 65,000 | \$ 78,250 | \$ 103,500 |
| Up to 1 Year | \$ 41,750 | \$ 50,000 | \$ 60,250 | \$ 79,500 |
| BUDGET ANALYST | | | | |
| Manager | \$ 83,500 | \$ 100,000 | \$ 120,250 | \$ 159,250 |
| Senior | \$ 66,750 | \$ 80,000 | \$ 96,250 | \$ 127,250 |
| 1 to 3 Years | \$ 54,250 | \$ 65,000 | \$ 78,250 | \$ 103,500 |
| Up to 1 Year | \$ 41,750 | \$ 50,000 | \$ 60,250 | \$ 79,500 |

CORPORATE ACCOUNTING

| TITLE/EXPERIENCE | PERCENTILES | | | |
|--------------------------------------|------------------|------------------------------|------------------|------------------|
| | 25 TH | 50 TH MIDPOINT | 75 TH | 95 TH |
| TREASURY ANALYST | | | | |
| Manager | \$ 87,750 | \$ 105,000 | \$ 126,250 | \$ 167,000 |
| Senior | \$ 66,000 | \$ 79,000 | \$ 95,000 | \$ 125,750 |
| 1 to 3 Years | \$ 53,500 | \$ 64,000 | \$ 77,000 | \$ 101,750 |
| Up to 1 Year | \$ 46,000 | \$ 55,000 | \$ 66,250 | \$ 87,500 |
| BUSINESS ANALYST | | | | |
| Manager | \$ 95,000 | \$ 110,000 | \$ 135,000 | \$ 179,000 |
| Senior | \$ 75,000 | \$ 86,000 | \$ 105,000 | \$ 140,000 |
| 1 to 3 Years | \$ 54,000 | \$ 67,000 | \$ 82,000 | \$ 109,000 |
| Up to 1 Year | \$ 40,750 | \$ 49,000 | \$ 59,250 | \$ 78,500 |
| DATA ANALYST | | | | |
| Manager | \$ 98,000 | \$ 118,000 | \$ 140,000 | \$ 185,500 |
| Senior | \$ 77,000 | \$ 92,000 | \$ 110,000 | \$ 145,000 |
| 1 to 3 Years | \$ 60,000 | \$ 72,000 | \$ 86,500 | \$ 113,000 |
| Up to 1 Year | \$ 43,000 | \$ 57,000 | \$ 62,000 | \$ 82,000 |
| BUSINESS INTELLIGENCE ANALYST | | | | |
| Manager | \$ 97,000 | \$ 116,000 | \$ 139,250 | \$ 184,000 |
| Senior | \$ 76,000 | \$ 91,000 | \$ 109,250 | \$ 144,250 |
| 1 to 3 Years | \$ 59,500 | \$ 71,000 | \$ 85,250 | \$ 112,500 |
| Up to 1 Year | \$ 42,750 | \$ 51,000 | \$ 61,250 | \$ 80,500 |
| BUSINESS SYSTEMS ANALYST | | | | |
| Manager | \$ 96,000 | \$ 115,000 | \$ 138,250 | \$ 183,000 |
| Senior | \$ 75,000 | \$ 90,000 | \$ 108,250 | \$ 143,250 |
| 1 to 3 Years | \$ 58,500 | \$ 70,000 | \$ 84,250 | \$ 111,500 |
| Up to 1 Year | \$ 41,750 | \$ 50,000 | \$ 60,250 | \$ 79,500 |
| FINANCIAL PROJECT MANAGER | | | | |
| Financial Project Manager | \$ 95,000 | \$ 120,000 | \$ 145,000 | \$ 192,000 |
| FINANCIAL SYSTEMS | | | | |
| Director | \$ 125,250 | \$ 150,000 | \$ 180,500 | \$ 238,750 |
| Manager | \$ 104,250 | \$ 125,000 | \$ 150,250 | \$ 199,000 |
| Project Manager | \$ 79,000 | \$ 110,000 | \$ 132,000 | \$ 175,000 |
| Administrator | \$ 54,250 | \$ 65,000 | \$ 78,250 | \$ 103,500 |
| FORENSIC ACCOUNTANT | | | | |
| Forensic Accountant | \$ 75,000 | \$ 90,000 | \$ 108,250 | \$ 143,250 |
| PROPERTY ACCOUNTANT | | | | |
| Property Accountant | \$ 45,750 | \$ 54,500 | \$ 66,250 | \$ 80,000 |

CORPORATE ACCOUNTING

| TITLE | PERCENTILES | | | |
|--|------------------|------------------------------|------------------|------------------|
| | 25 TH | 50 TH MIDPOINT | 75 TH | 95 TH |
| OPERATIONAL SUPPORT: CREDIT AND COLLECTIONS | | | | |
| Credit Manager/Supervisor | \$ 56,750 | \$ 69,500 | \$ 84,000 | \$ 112,000 |
| Assistant Credit Manager | \$ 48,500 | \$ 58,000 | \$ 69,750 | \$ 92,250 |
| Credit/Collections Analyst | \$ 42,500 | \$ 51,000 | \$ 61,250 | \$ 81,250 |
| Credit/Collections Clerk | \$ 32,000 | \$ 38,250 | \$ 46,000 | \$ 60,750 |
| OPERATIONAL SUPPORT: BOOKKEEPERS | | | | |
| Full Charge Bookkeeper | \$ 37,500 | \$ 42,250 | \$ 52,000 | \$ 65,000 |
| Bookkeeper | \$ 33,250 | \$ 37,500 | \$ 43,000 | \$ 55,000 |
| Accounting Clerk | \$ 28,000 | \$ 34,000 | \$ 39,500 | \$ 52,500 |
| OPERATIONAL SUPPORT: PAYROLL AND OTHER | | | | |
| AR/AP ^c Manager | \$ 47,750 | \$ 60,000 | \$ 72,750 | \$ 96,500 |
| AR/AP ^c Clerk | \$ 31,250 | \$ 34,250 | \$ 39,500 | \$ 50,000 |
| Billing Manager/Supervisor | \$ 42,000 | \$ 51,000 | \$ 65,000 | \$ 90,000 |
| Billing Clerk | \$ 29,000 | \$ 34,000 | \$ 41,000 | \$ 54,250 |
| Payroll Manager/Supervisor | \$ 58,250 | \$ 71,000 | \$ 85,250 | \$ 124,750 |
| Payroll Coordinator/Administrator | \$ 37,500 | \$ 44,750 | \$ 52,000 | \$ 70,000 |
| Payroll Clerk | \$ 31,250 | \$ 37,750 | \$ 45,500 | \$ 60,000 |
| Purchasing Manager | \$ 54,000 | \$ 65,000 | \$ 78,000 | \$ 103,500 |
| Inventory Analyst | \$ 38,000 | \$ 46,500 | \$ 55,000 | \$ 73,500 |
| Inventory Clerk | \$ 30,000 | \$ 36,000 | \$ 43,250 | \$ 57,250 |

PUBLIC ACCOUNTING

| TITLE/EXPERIENCE | PERCENTILES | | | |
|---|------------------|------------------------------|------------------|------------------|
| | 25 TH | 50 TH MIDPOINT | 75 TH | 95 TH |
| TAX SERVICES^d | | | | |
| Senior Manager/Director ^a | \$ 110,250 | \$ 132,000 | \$ 158,750 | \$ 210,000 |
| Manager ^a | \$ 85,000 | \$ 102,000 | \$ 122,500 | \$ 162,250 |
| Senior | \$ 58,500 | \$ 70,000 | \$ 84,250 | \$ 111,500 |
| 1 to 3 Years | \$ 47,000 | \$ 56,500 | \$ 68,000 | \$ 90,000 |
| Up to 1 Year | \$ 38,500 | \$ 46,000 | \$ 55,250 | \$ 73,250 |
| AUDIT/ASSURANCE SERVICES^d | | | | |
| Senior Manager/Director ^a | \$ 108,250 | \$ 129,750 | \$ 156,000 | \$ 206,500 |
| Manager ^a | \$ 73,750 | \$ 88,500 | \$ 106,500 | \$ 140,750 |
| Senior | \$ 52,500 | \$ 63,000 | \$ 75,750 | \$ 100,250 |
| 1 to 3 Years | \$ 42,500 | \$ 51,000 | \$ 61,250 | \$ 81,250 |
| Up to 1 Year | \$ 38,500 | \$ 46,000 | \$ 55,250 | \$ 73,250 |

FINANCIAL SERVICES

| TITLE/EXPERIENCE | PERCENTILES | | | |
|--|------------------|------------------------------|------------------|------------------|
| | 25 TH | 50 TH MIDPOINT | 75 TH | 95 TH |
| BANKING AND FINANCIAL MARKETS | | | | |
| Managing Director/Partner | \$ 158,500 | \$ 190,000 | \$ 228,500 | \$ 302,500 |
| Vice President | \$ 121,000 | \$ 150,000 | \$ 174,500 | \$ 230,750 |
| Associate | \$ 79,250 | \$ 105,000 | \$ 114,250 | \$ 151,250 |
| Analyst | \$ 54,250 | \$ 70,000 | \$ 78,250 | \$ 103,500 |
| Business Development Officer | \$ 93,750 | \$ 112,500 | \$ 135,250 | \$ 179,000 |
| Portfolio Manager | \$ 96,000 | \$ 115,000 | \$ 138,250 | \$ 183,000 |
| Commercial Lender 5+ Years | \$ 87,750 | \$ 105,000 | \$ 126,250 | \$ 167,000 |
| Commercial Lender 3 to 5 Years | \$ 62,500 | \$ 75,000 | \$ 90,250 | \$ 119,500 |
| Commercial Lender 1 to 3 Years | \$ 48,000 | \$ 57,500 | \$ 69,000 | \$ 91,500 |
| Private Banker 5+ Years | \$ 79,250 | \$ 95,000 | \$ 114,250 | \$ 151,250 |
| Private Banker 3 to 5 Years | \$ 58,500 | \$ 70,000 | \$ 84,250 | \$ 111,500 |
| Private Banker 1 to 3 Years | \$ 46,000 | \$ 55,000 | \$ 66,250 | \$ 87,500 |
| Credit Analyst 5+ Years | \$ 66,750 | \$ 80,000 | \$ 96,250 | \$ 127,250 |
| Credit Analyst 3 to 5 Years | \$ 50,000 | \$ 60,000 | \$ 72,250 | \$ 95,500 |
| Credit Analyst 1 to 3 Years | \$ 43,000 | \$ 51,500 | \$ 62,000 | \$ 82,000 |
| Internal Wholesaler | \$ 41,750 | \$ 50,000 | \$ 60,250 | \$ 79,500 |
| FINANCE AND ACCOUNTING | | | | |
| Chief Financial Officer ^a | \$ 166,750 | \$ 200,000 | \$ 240,500 | \$ 498,000 |
| Controller ^a | \$ 104,250 | \$ 125,000 | \$ 150,250 | \$ 199,000 |
| Accountant 5+ Years | \$ 66,750 | \$ 80,000 | \$ 96,250 | \$ 127,250 |
| Accountant 3 to 5 Years | \$ 58,500 | \$ 70,000 | \$ 84,250 | \$ 111,500 |
| Accountant 1 to 3 Years | \$ 50,000 | \$ 60,000 | \$ 72,250 | \$ 95,500 |
| Product Controller – Manager | \$ 75,000 | \$ 90,000 | \$ 108,250 | \$ 143,250 |
| Product Controller 3 to 5 Years | \$ 54,250 | \$ 85,000 | \$ 94,500 | \$ 103,500 |
| Product Controller 1 to 3 Years | \$ 47,250 | \$ 65,000 | \$ 77,500 | \$ 90,000 |
| Financial Planning & Analysis – Manager | \$ 83,500 | \$ 115,000 | \$ 135,000 | \$ 159,250 |
| Financial Planning & Analysis 3 to 5 Years | \$ 62,750 | \$ 75,000 | \$ 90,500 | \$ 119,750 |
| Financial Planning & Analysis 1 to 3 Years | \$ 50,000 | \$ 65,000 | \$ 72,250 | \$ 95,500 |
| Hedge Fund Accountant – Manager | \$ 62,500 | \$ 75,000 | \$ 90,250 | \$ 119,500 |
| Hedge Fund Accountant 3 to 5 Years | \$ 52,000 | \$ 62,250 | \$ 74,750 | \$ 99,000 |
| Hedge Fund Accountant 1 to 3 Years | \$ 40,000 | \$ 48,000 | \$ 57,750 | \$ 76,500 |
| Mutual Fund Accountant – Manager | \$ 57,000 | \$ 68,250 | \$ 82,000 | \$ 108,500 |
| Mutual Fund Accountant 3 to 5 Years | \$ 41,750 | \$ 50,000 | \$ 60,250 | \$ 79,500 |
| Mutual Fund Accountant 1 to 3 Years | \$ 37,500 | \$ 45,000 | \$ 54,000 | \$ 71,500 |

FINANCIAL SERVICES

| TITLE/EXPERIENCE | PERCENTILES | | | |
|--|------------------|------------------------------|------------------|------------------|
| | 25 TH | 50 TH MIDPOINT | 75 TH | 95 TH |
| FINANCE AND ACCOUNTING (Cont.) | | | | |
| Internal Auditor – Manager | \$ 87,500 | \$ 115,000 | \$ 126,250 | \$ 167,000 |
| Internal Auditor 3 to 5 Years | \$ 67,000 | \$ 85,000 | \$ 96,500 | \$ 127,750 |
| Internal Auditor 1 to 3 Years | \$ 56,750 | \$ 68,000 | \$ 81,750 | \$ 108,250 |
| Regulatory Reporting – Manager | \$ 73,250 | \$ 110,000 | \$ 121,500 | \$ 139,750 |
| Regulatory Reporting 3 to 5 Years | \$ 58,500 | \$ 75,000 | \$ 84,250 | \$ 111,500 |
| Regulatory Reporting 1 to 3 Years | \$ 48,250 | \$ 57,750 | \$ 69,500 | \$ 92,000 |
| Financial Analyst | \$ 57,500 | \$ 75,000 | \$ 82,750 | \$ 109,500 |
| Tax Accountant | \$ 54,250 | \$ 65,000 | \$ 78,250 | \$ 103,500 |
| RISK AND COMPLIANCE | | | | |
| Chief Risk Officer | \$ 144,500 | \$ 173,250 | \$ 208,500 | \$ 275,750 |
| Market Risk Analyst – Manager | \$ 96,000 | \$ 115,000 | \$ 138,250 | \$ 183,000 |
| Market Risk Analyst 3 to 5 Years | \$ 71,000 | \$ 85,000 | \$ 102,250 | \$ 135,250 |
| Credit Risk Analyst – Manager | \$ 79,500 | \$ 95,250 | \$ 114,500 | \$ 151,500 |
| Credit Risk Analyst 3 to 5 Years | \$ 66,750 | \$ 80,000 | \$ 96,250 | \$ 127,250 |
| Operational Risk Analyst – Manager | \$ 79,250 | \$ 95,000 | \$ 114,250 | \$ 151,250 |
| Operational Risk Analyst 3 to 5 Years | \$ 60,250 | \$ 72,250 | \$ 87,000 | \$ 115,000 |
| Chief Compliance Officer | \$ 162,750 | \$ 195,000 | \$ 234,500 | \$ 310,250 |
| Compliance Officer | \$ 83,500 | \$ 120,000 | \$ 135,000 | \$ 159,250 |
| Compliance Manager | \$ 75,000 | \$ 110,000 | \$ 125,000 | \$ 143,250 |
| Compliance Analyst | \$ 66,750 | \$ 80,000 | \$ 96,250 | \$ 127,250 |
| Anti-Money Laundering Specialist | \$ 66,000 | \$ 79,000 | \$ 95,000 | \$ 125,500 |
| Fraud Investigator | \$ 58,000 | \$ 69,750 | \$ 83,750 | \$ 111,000 |
| Regulatory Affairs Specialist | \$ 71,000 | \$ 85,000 | \$ 102,250 | \$ 135,250 |
| OPERATIONS | | | | |
| Director of Operations | \$ 112,500 | \$ 135,000 | \$ 162,250 | \$ 214,750 |
| Operations Manager | \$ 79,250 | \$ 95,000 | \$ 114,250 | \$ 151,250 |
| Banking Operations Specialist 5+ Years | \$ 52,000 | \$ 62,250 | \$ 74,750 | \$ 99,000 |
| Banking Operations Specialist 3 to 5 Years | \$ 41,750 | \$ 50,000 | \$ 60,250 | \$ 79,500 |
| Banking Operations Specialist 1 to 3 Years | \$ 35,000 | \$ 42,000 | \$ 50,500 | \$ 66,750 |
| Fund Operations Specialist 5+ Years | \$ 54,250 | \$ 65,000 | \$ 78,250 | \$ 103,500 |
| Fund Operations Specialist 3 to 5 Years | \$ 43,750 | \$ 52,500 | \$ 63,250 | \$ 83,500 |
| Fund Operations Specialist 1 to 3 Years | \$ 37,500 | \$ 45,000 | \$ 54,250 | \$ 71,500 |

FIND OUT HOW TO USE THE SALARY PERCENTILES. [WATCH VIDEO](#)

FINANCIAL SERVICES

| TITLE/EXPERIENCE | PERCENTILES | | | |
|--|------------------|------------------------------|------------------|------------------|
| | 25 TH | 50 TH MIDPOINT | 75 TH | 95 TH |
| OPERATIONS (Cont.) | | | | |
| Client Service Representative 5+ Years | \$ 64,750 | \$ 77,750 | \$ 93,500 | \$ 123,750 |
| Client Service Representative 3 to 5 Years | \$ 50,000 | \$ 60,000 | \$ 72,250 | \$ 95,500 |
| Client Service Representative 1 to 3 Years | \$ 39,750 | \$ 47,750 | \$ 57,500 | \$ 76,000 |
| Sales/Trader Assistant | \$ 47,250 | \$ 56,750 | \$ 68,250 | \$ 90,250 |
| Performance Analyst | \$ 51,250 | \$ 61,500 | \$ 74,000 | \$ 97,750 |
| Loan Processor | \$ 31,250 | \$ 37,500 | \$ 45,000 | \$ 59,750 |
| Loan Administrator | \$ 26,000 | \$ 31,250 | \$ 37,500 | \$ 49,750 |
| Mortgage Processor | \$ 27,750 | \$ 33,250 | \$ 40,000 | \$ 53,000 |
| Mortgage Underwriter | \$ 52,250 | \$ 62,500 | \$ 75,250 | \$ 99,500 |

HEALTHCARE

| TITLE | PERCENTILES | | | |
|--|------------------|------------------------------|------------------|------------------|
| | 25 TH | 50 TH MIDPOINT | 75 TH | 95 TH |
| Revenue Cycle Director | \$ 75,000 | \$ 90,000 | \$ 108,250 | \$ 143,250 |
| Medical Billing Manager/Supervisor | \$ 50,000 | \$ 60,000 | \$ 72,250 | \$ 95,500 |
| Medical Collections Manager/Supervisor | \$ 50,000 | \$ 60,000 | \$ 72,250 | \$ 95,500 |
| Revenue Cycle Analyst | \$ 43,500 | \$ 52,000 | \$ 62,500 | \$ 82,750 |
| Medical Biller | \$ 27,750 | \$ 33,250 | \$ 40,000 | \$ 57,250 |
| Denials Specialist | \$ 29,250 | \$ 35,000 | \$ 42,000 | \$ 55,750 |
| Medical Collections Specialist | \$ 27,750 | \$ 33,250 | \$ 40,000 | \$ 57,500 |
| Payment Poster | \$ 27,000 | \$ 32,500 | \$ 39,000 | \$ 51,750 |
| Charge Entry Clerk | \$ 25,750 | \$ 31,000 | \$ 37,250 | \$ 50,250 |
| Claims Examiner/Analyst | \$ 41,750 | \$ 50,000 | \$ 60,250 | \$ 79,500 |
| Claims Processor | \$ 29,000 | \$ 33,250 | \$ 40,000 | \$ 54,250 |

- a. Bonuses and incentives reflect an increasingly large part of overall pay at this level and are not included in the salary figures listed. Advanced degrees or professional certifications also are assumed at this level.
- b. This title is a senior-management position. The tax manager title on Page 14 is a line-management position.
- c. AR/AP = Accounts Receivable/Accounts Payable
- d. Salary does not reflect overtime or bonuses.

PUT YOUR SALARY KNOWLEDGE TO WORK.

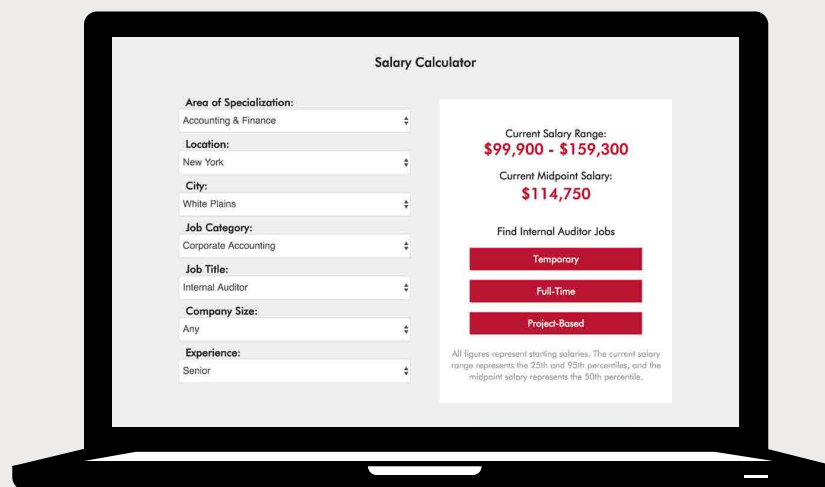
FIND TALENT

FIND JOBS

Calculate Your Custom Salary

As you know, compensation for the same role can vary widely depending on where the job is. To find salaries for a given city, go to the [Salary Calculator](#) and select the job title and city. The online tool calculates a result for you.

CALCULATE YOUR CUSTOM SALARY



The salaries listed in the guide can be customized for nearly 600 cities using the Salary Calculator.

Local Market Variances

The starting salaries on the previous pages reflect the national averages for each position. For guidance on local compensation, increase or decrease the national salary by the percentage below for your city.

The following local market variances are based on data from the U.S. Bureau of Labor Statistics and Robert Half and are general guidelines only. They are reflective of all industries and professions and may apply differently from staff- to executive-level roles. For more information on average starting salaries in your area, contact the Robert Half office nearest you.

| | | | | |
|---------------------|-----------------------------|--------|--------------------------------|--------|
| ALABAMA | Santa Rosa | +20% | Melbourne | -9.5% |
| Birmingham | Stockton | -15% | Miami/ Fort Lauderdale | +6.5% |
| Huntsville | | | Orlando | +0.5% |
| Mobile | COLORADO | | St. Petersburg | -3% |
| | Boulder | +17.5% | Tampa | -1% |
| ARIZONA | Colorado Springs | -3.5% | West Palm Beach | +1% |
| Phoenix | Denver | +9% | | |
| Tucson | Fort Collins | -2% | GEORGIA | |
| | Greeley | -11% | Atlanta | +6% |
| ARKANSAS | Loveland | -5% | Macon | -18% |
| Fayetteville | Pueblo | -17% | Savannah | -15% |
| Little Rock | | | | |
| | CONNECTICUT | | HAWAII | |
| CALIFORNIA | Hartford | +17% | Honolulu | +7% |
| Fresno | New Haven | +12% | | |
| Irvine | Stamford | +31% | IDAHO | |
| Los Angeles | | | Boise | -13.9% |
| Oakland | DELAWARE | | | |
| Ontario | Wilmington | +5% | ILLINOIS | |
| Sacramento | | | Chicago | +23.5% |
| San Diego | DISTRICT OF COLUMBIA | | Naperville | +12% |
| San Francisco | Washington | +33% | Rockford | -15% |
| San Jose | | | | |
| San Rafael | FLORIDA | | INDIANA | |
| Santa Barbara | Fort Myers | -9% | Fort Wayne | -16% |
| | Jacksonville | -4.5% | Indianapolis | -3% |

IOWA

| | |
|--------------------------|------|
| Cedar Rapids | -6% |
| Davenport | -5% |
| Des Moines | +0% |
| Sioux City | -16% |
| Waterloo/ Cedar Falls | -13% |

KANSAS

| | |
|---------------|-------|
| Overland Park | +0.5% |
|---------------|-------|

KENTUCKY

| | |
|------------|-------|
| Lexington | -8.5% |
| Louisville | -8% |

LOUISIANA

| | |
|-------------|-----|
| Baton Rouge | -1% |
| New Orleans | -1% |

MAINE

| | |
|----------|-----|
| Portland | -5% |
|----------|-----|

MARYLAND

| | |
|-----------|-----|
| Baltimore | +3% |
|-----------|-----|

MASSACHUSETTS

| | |
|-------------|------|
| Boston | +34% |
| Springfield | +1% |

MICHIGAN

| | |
|--------------|--------|
| Ann Arbor | +1.5% |
| Detroit | +0% |
| Grand Rapids | -14.5% |
| Kalamazoo | -20% |
| Lansing | -15% |

MINNESOTA

| | |
|-------------|--------|
| Bloomington | +6.5% |
| Duluth | -20.4% |
| Minneapolis | +7% |
| Rochester | +2% |
| St. Cloud | -16.5% |
| St. Paul | +4% |

MISSOURI

| | |
|-------------|-------|
| Kansas City | -0.5% |
| St. Joseph | -10% |
| St. Louis | -0.5% |

NEBRASKA

| | |
|-------|-----|
| Omaha | -3% |
|-------|-----|

NEVADA

| | |
|-----------|-----|
| Las Vegas | +0% |
| Reno | +0% |

NEW HAMPSHIRE

| | |
|-----------------------|------|
| Manchester/ Nashua | +14% |
|-----------------------|------|

NEW JERSEY

| | |
|--------------|--------|
| Mount Laurel | +15% |
| Paramus | +30% |
| Princeton | +25% |
| Woodbridge | +26.5% |

NEW MEXICO

| | |
|-------------|-------|
| Albuquerque | -8.5% |
|-------------|-------|

NEW YORK

| | |
|-------------|--------|
| Albany | -4% |
| Buffalo | -6.5% |
| Long Island | +20% |
| New York | +40.5% |
| Rochester | -6.5% |
| Syracuse | -9.7% |

NORTH CAROLINA

| | |
|------------|-----|
| Charlotte | +2% |
| Greensboro | +0% |
| Raleigh | +4% |

OHIO

| | |
|------------|--------|
| Akron | -11% |
| Canton | -18% |
| Cincinnati | -2.5% |
| Cleveland | -4% |
| Columbus | -2% |
| Dayton | -13% |
| Toledo | -14.5% |
| Youngstown | -24% |

OKLAHOMA

| | |
|---------------|-----|
| Oklahoma City | -7% |
| Tulsa | -7% |

OREGON

| | |
|----------|-----|
| Portland | +7% |
|----------|-----|

PENNSYLVANIA

| | |
|--------------|------|
| Harrisburg | -5% |
| Philadelphia | +15% |
| Pittsburgh | -2% |

RHODE ISLAND

| | |
|------------|-------|
| Providence | +1.5% |
|------------|-------|

SOUTH CAROLINA

| | |
|------------|-------|
| Charleston | -5.5% |
| Columbia | -6.5% |
| Greenville | -7% |

SOUTH DAKOTA

| | |
|-------------|------|
| Sioux Falls | -16% |
|-------------|------|

TENNESSEE

| | |
|--------------|-------|
| Chattanooga | -11% |
| Cool Springs | +0% |
| Knoxville | -11% |
| Memphis | -5% |
| Nashville | +1.5% |

TEXAS

| | |
|----------------|------|
| Austin | +8% |
| Dallas | +10% |
| El Paso | -28% |
| Fort Worth | +9% |
| Houston | +7% |
| Midland/Odessa | +10% |
| San Antonio | +1% |

UTAH

| | |
|----------------|-----|
| Salt Lake City | +5% |
|----------------|-----|

VIRGINIA

| | |
|---------------------------|-------|
| Norfolk/ Hampton Roads | -2% |
| Richmond | -1.5% |
| Tysons Corner | +32% |

WASHINGTON

| | |
|---------|------|
| Seattle | +21% |
| Spokane | -18% |

WISCONSIN

| | |
|-----------|--------|
| Appleton | -15% |
| Green Bay | -13.5% |
| Madison | -1.5% |
| Milwaukee | +1% |
| Waukesha | -1% |

Get local starting salary data for specific roles at roberthalf.com/salary-guide/finance.

Building an Engaged, Productive Team

Levels of Job Satisfaction

In a study on workplace happiness by Robert Half and Happiness Works, professionals in 13 fields were asked to evaluate their feelings about on-the-job happiness, interest in their work and stress levels. Here are the results:

| LEVEL OF ON-THE-JOB HAPPINESS | LEVEL OF INTEREST IN THEIR WORK | LOWEST ON-THE-JOB STRESS LEVELS |
|----------------------------------|----------------------------------|----------------------------------|
| 1 Education and Training | 1 Education and Training | 1 Technology |
| 2 Marketing and Creative | 2 Healthcare and Wellness | 2 Finance |
| 3 Healthcare and Wellness | 3 Marketing and Creative | 3 Marketing and Creative |
| 4 Human Resources | 4 Legal | 4 Human Resources |
| 5 Legal | 5 Human Resources | 5 Accounting |
| 6 Technology | 6 Technology | 6 Manufacturing |
| 7 Accounting | 7 Administrative | 7 Administrative |
| 8 Administrative | 8 Manufacturing | 8 Education and Training |
| 9 Insurance | 9 Financial Services | 9 Financial Services |
| 10 Financial Services | 10 Accounting | 10 Hospitality and Food Services |
| 11 Manufacturing | 11 Finance | 11 Healthcare and Wellness |
| 12 Finance | 12 Insurance | 12 Insurance |
| 13 Hospitality and Food Services | 13 Hospitality and Food Services | 13 Legal |

Here are some steps to help you increase job satisfaction among your team members:



HIRE FOR FIT

Employees who mesh well with the workplace culture are likely to feel a greater sense of engagement and loyalty.



EMPOWER STAFF

Let employees make decisions about their work on their own, or with minimal direction.



SHOW APPRECIATION

Be quick to thank staff members for a job well done.



PROVIDE MEANINGFUL WORK

Be sure to share how your team's contributions support big-picture goals.



FOSTER A CULTURE OF COLLABORATION

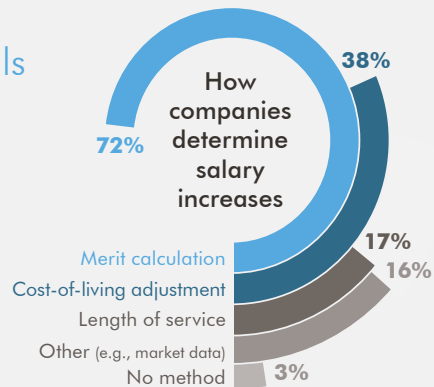
Staff cohesion fuels job satisfaction — as well as innovation.

[Find out more about improving happiness in your workplace.](#)

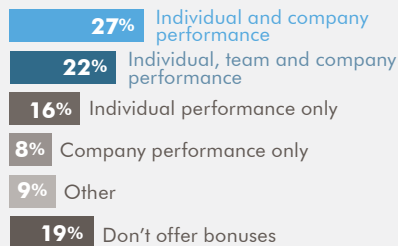
Pay to Perks: Trends in Compensation Packages

Highly skilled professionals expect not just a base salary that's in line with what other firms are offering but also a choice of benefits, incentives and perks that are just as competitive.

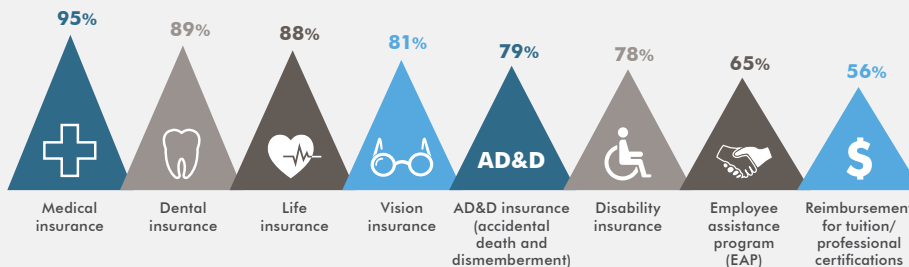
To find out more about the compensation strategies prevalent today, Robert Half surveyed more than 740 human resources, compensation and benefits professionals in businesses across a variety of industries in North America. The results are shown on this and the following pages.



How companies determine bonuses*



The most common benefits offered (1/2)**



Benefits, incentives and perks: What's the difference?



Benefits are any form of noncash compensation paid indirectly to an employee and not tied to job performance. Examples: medical insurance, retirement plans.

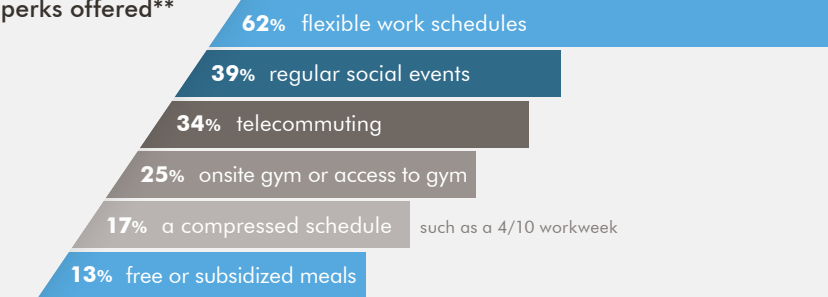


Incentives are cash or other awards made to reward or incent superior performance and boost retention. They are not guaranteed but tied to job performance. Examples: bonuses, spot awards.

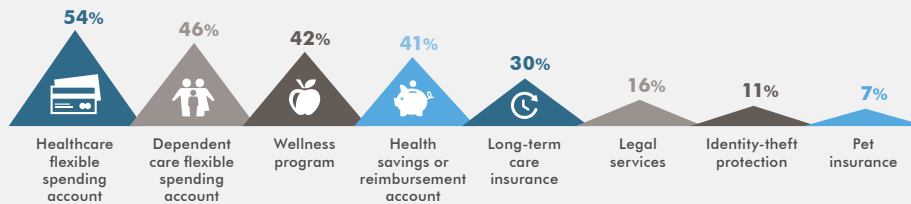


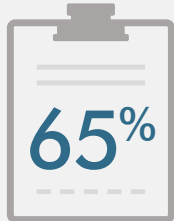
Perks (short for perquisites) are privileges granted to employees in addition to benefits and incentives. Examples: gym membership, free meals.

The most common perks offered**



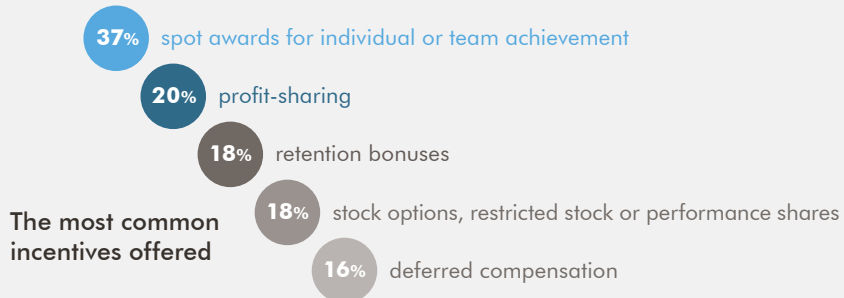
The most common benefits offered (2/2)**





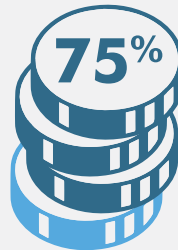
Pay for performance

Nearly 2 out of 3 companies tie compensation to organizational or individual performance.



Helping employees save for retirement

On average, **employers match 3 to 4%** of employees' 401(k) or Registered Retirement Savings Plan (RRSP)** contributions.



75% of companies offer a 401(k) or RRSP.



Time-off policies

On average, employers offer **14 days of paid vacation** for the first 5 years of employment, plus **9 paid holidays**, including floating holidays.

*Responses do not total 100 percent due to rounding.

**Only the top responses shown.

***401(k) in the United States and RRSP in Canada

Source: Robert Half survey of more than 740 human resources, compensation and benefits executives in North America

About Robert Half

Robert Half is the world's premier specialized staffing firm. We match organizations of all sizes with highly skilled accounting, finance and business systems professionals for temporary, consulting, interim-to-hire and full-time positions. Our placements are made personally by our skilled recruiters and supported by the latest technology.

Robert Half staffing experts have access to top job candidates, including professionals who aren't actively looking for work but who may be open to changing jobs for the right opportunity. This gives your firm more options than you'd have on your own.

Our recruiters will interview promising candidates for you, assess their skill sets and fit for your workplace culture, advise you on competitive salary ranges, and help you hire your top choice before the competition does. We deliver turnkey results, quickly.

Robert Half places top accounting and finance talent with businesses worldwide, no matter their hiring needs.

Accountemps places accounting and finance professionals for temporary and temporary-to-hire positions.

Robert Half Finance & Accounting places full-time accounting and finance professionals.

Robert Half Management Resources places senior-level accounting, finance and business systems professionals on a project and interim basis.

Robert Half Financial Services places full-time, temporary and project professionals with financial institutions.

Our **Salaried Professional Service** provides access to full-time consultants for long-term and recurring projects.

Global consulting firm **Protiviti**, a Robert Half subsidiary, provides consulting solutions in finance, technology, operations, data, analytics, governance, risk and internal audit. Through Protiviti, Robert Half offers a full suite of consulting services.

Contact Robert Half **online** or call us at **1.844.900.0333** to learn how we can help you find the talent you need today.

**DON'T WASTE TIME ON
A BAD HIRE.**

GET HELP HIRING

Worldwide Locations

UNITED STATES OFFICES

Alabama

Birmingham

Arizona

Chandler
Phoenix
Phoenix – West
Tucson

Arkansas

Fayetteville
Little Rock

California

Bakersfield
Burbank
Carlsbad
Cerritos
City of Industry
Fairfield
Fremont
Fresno
Irvine
La Jolla
Laguna Niguel
Long Beach
Los Angeles
Los Angeles – LAX
Modesto
Monterey
Oakland
Ontario
Orange
Oxnard
Palm Springs
Palo Alto
Pasadena
Pleasanton
Rancho Bernardo
Rancho Cordova
Riverside
Sacramento
San Diego
San Francisco
San Jose
San Mateo
Santa Barbara
Santa Clara
Santa Rosa
Stockton
Torrance
Visalia
Walnut Creek
Westlake Village

Westwood
Woodland Hills

Colorado

Boulder
Colorado Springs
Denver
Englewood
Fort Collins
Lakewood

Connecticut

Danbury
Hartford
New Haven
Shelton
Stamford

Delaware

Wilmington

District of Columbia

Washington

Florida

Boca Raton
Brandon
Coral Gables
Fort Lauderdale
Fort Myers
Heathrow
Jacksonville
Miami – Downtown
Orlando
St. Petersburg
Tampa
West Palm Beach

Georgia

Alpharetta
Atlanta – Buckhead
Atlanta – Galleria
Atlanta – South
Gwinnett
Macon
Savannah

Hawaii

Honolulu

Idaho

Boise

Illinois

Chicago
Gurnee

Hoffman Estates
Naperville
Northbrook
Oakbrook Terrace
Rosemont
Tinley Park

Indiana

Fishers
Fort Wayne
Indianapolis – Downtown
Indianapolis – West
Merrillville

Iowa

Cedar Rapids
Davenport
Des Moines

Kansas

Overland Park

Kentucky

Lexington
Louisville

Louisiana

Baton Rouge
New Orleans

Maine

Portland

Maryland

Baltimore
Bethesda
Columbia
Greenbelt
Hunt Valley

Massachusetts

Boston
Burlington
Cambridge
Danvers
Framingham
Quincy
Springfield
Westborough

Michigan

Ann Arbor
Dearborn
Grand Rapids
Kalamazoo
Lansing
Southfield
Troy

Minnesota

Bloomington
Burnsville
Minneapolis
Minnetonka
St. Cloud
St. Paul

Missouri

Creve Coeur
Kansas City
St. Louis

Nebraska

Omaha

Nevada

Las Vegas
Reno

New Hampshire

Manchester
Nashua
Portsmouth

New Jersey

Bridgewater
Jersey City
Mount Laurel
Parsippany
Princeton
Red Bank
Rutherford
Saddle Brook
Woodbridge

New Mexico

Albuquerque

New York

Albany
Brooklyn
Buffalo
Hauppauge
New York – Midtown
New York – Wall Street
Queens
Rochester
Syracuse
Uniondale
White Plains

North Carolina

Chapel Hill
Charlotte
Charlotte – South
Greensboro
Raleigh

Ohio

Akron
Beachwood
Blue Ash
Canton
Cincinnati
Cleveland
Columbus
Dayton
Dublin
Easton
North Olmsted
Toledo
West Chester
Youngstown

Oklahoma

Oklahoma City
Tulsa

Oregon

Beaverton
Eugene
Portland

Pennsylvania

Harrisburg
Hermitage
King of Prussia
Lehigh Valley
Moon
Philadelphia
Pittsburgh
Reading
Trevoise
Wexford

Rhode Island

Providence

South Carolina

Charleston
Columbia
Greenville
Spartanburg

South Dakota

Sioux Falls

Tennessee

Chattanooga
Knoxville
Memphis – Downtown
Memphis – East
Nashville – Cool Springs
Nashville – Downtown

Texas

Austin
Dallas – Downtown
Dallas – Galleria
El Paso
Fort Worth
Houston – Clear Lake
Houston – Downtown
Houston – Galleria
Houston – Northwest
Houston – West
Irving
Midland/Odessa
Plano
San Antonio –
Alamo Heights
San Antonio – Colonnade
The Woodlands

Utah

Salt Lake City
Thanksgiving Point

Virginia

Alexandria
Dulles
Norfolk
Richmond – Downtown
Richmond – West
Tysons Corner

Washington

Bellevue
Federal Way
Lynnwood
Seattle
Spokane

Wisconsin

Appleton
Madison
Milwaukee
Waukesha

INTERNATIONAL OFFICES**Australia**

Brisbane
Melbourne
Mount Waverley
Perth
Sydney

Austria

Vienna

Belgium

Antwerp
Brussels
Charleroi
Diegem
Ghent
Groot-Bijgaarden
Hasselt
Liège
Roeselare
Wavre

Brazil

Barra
Belo Horizonte
Campinas
Rio de Janeiro
São Paulo

Canada**Alberta**

Calgary
Edmonton

British Columbia

Fraser Valley
Vancouver

Manitoba

Winnipeg

Ontario

Brampton
Burlington
Kitchener/Waterloo
Markham
Mississauga
North York
Ottawa
Toronto
Vaughan

Quebec

Laval
Montreal
Quebec City
West Island

Chile

Santiago

China

Hong Kong
Shanghai

France

Aix-en-Provence
La Défense
Lyon
Massy
Paris
Stade de France
Versailles

Germany

Berlin
Bonn

Cologne

Düsseldorf
Essen
Frankfurt
Hamburg
Mannheim
Munich
Stuttgart
Wiesbaden

Japan

Osaka
Tokyo

Luxembourg

Luxembourg

The Netherlands

Amsterdam
Eindhoven
Rotterdam

New Zealand

Auckland

Singapore

Singapore

Switzerland

Zurich

United Arab Emirates

Abu Dhabi
Dubai

United Kingdom

Birmingham
Bristol
Cambridge
Cardiff
East Midlands
Edinburgh
Guildford
Leeds
London Central
London West
Manchester
Milton Keynes
Oxford
Reading
South Coast
Swindon
Watford

Find the office nearest you [online](#)
or by calling **1.844.900.0333**.

 **Accountemps®**
A Robert Half Company
accountemps.com

 **Robert Half®**
Finance & Accounting
roberthalffinance.com

 **Robert Half®**
Management Resources
roberthalfmr.com

2884 Sand Hill Road
Menlo Park, CA 94025
[**1.844.900.0333**](tel:18449000333)

[**roberthalf.com**](http://roberthalf.com)



All trademarks contained herein are the property of their respective owners.
© 2017 Robert Half International Inc. An Equal Opportunity Employer M/F/Disability/Veterans. ATFAMR-0917